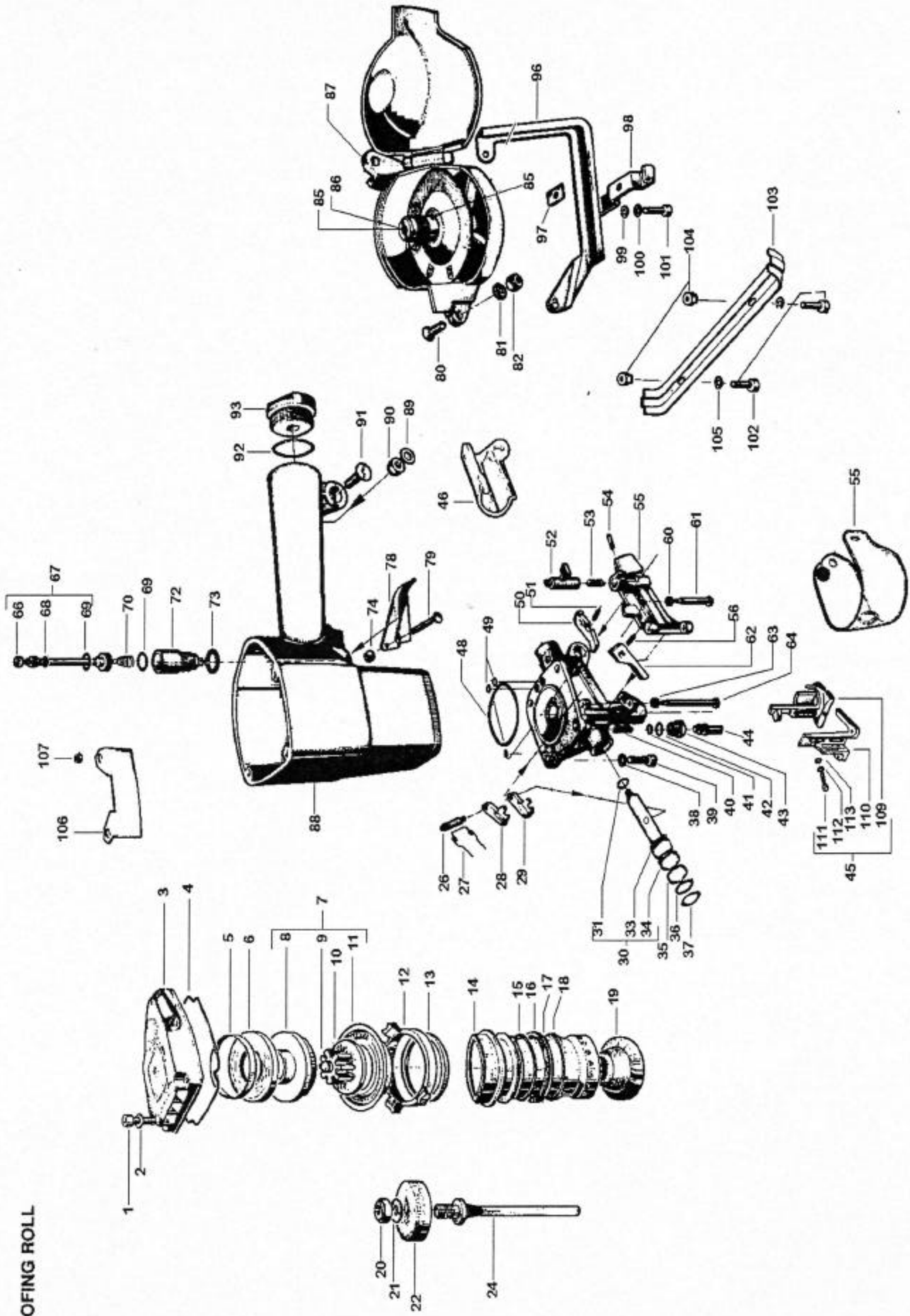


ROOFING ROLL



## ISM ROOFING ROLL

1	37001330	Head screw	54	37035208	Elastic pin
2	37024310	Washer	56	37050110	Spring
3	37674911	Head Black	55	37621361	Cover
4	37089220	Head o ring	60	37099950	Gasket
5	37674050	Metal plate	61	37621440	Pin
6	37674481	Valve bumper	62	37621412	Lower balancer
7	37674041	Valve Assembly	63	37099800	Gasket
8	37674021	Valve	64	37620390	Pin
9	37090920	O ring	65	37099701	Shield
10	37674100	Piston bumper	66	37099530	Gasket
11	37674450	Membrane	67	37674710	Shaft assembly
12	37674230	Cylinder flange	68	37090621	O ring
13	37674240	O ring	69	37090525	O ring
14	37674170	Cylinder	70	37053050	Spring
15	37090566	Internal o ring	72	37561112	Servocontrol assembly
16	37674140	Diaphragm	73	37099120	Gasket
17	37091081	Diaphragm o ring	74	37099950	Gasket
18	37091066	O ring	78	37605150	Trigger
19	37620210	Bumper	79	37621440	Trigger pin
20	37011525	Piston nut	80	37006430	Screw
21	37054506	Washer	81	37620670	Bushing
22	37674180	Piston	82	37011417	Nut
24	37621990	Driver blade	83	37671650	Support
26	37620322	Pin	84	37037144	Pin
27	37052152	Spring	85	37037150	Pin
28	37621342	Top feeder	86	37051170	Spring
29	37621300	Lower feeder	87	37621841	Magazine
30	37674410	A Feeder piston assembly	88	37674060	Body
31	37088010	A U-cup Seal	89	37024416	Nut
33	37099710	Piston nozzle	90	37011417	Nut
34	37088020	A U-cup Seal	91	37001422	Screw
35	37620400	Cover	92	37091055	O ring
36	37032017	Stop o ring	93	37551440	Inlet nozzle
37	37090535	O ring	96	37621851	Support
38	37021416	Washer	97	37570720	Mounting nut
39	37001425	Screw	98	37621860	Shingle guide
40	37050840	Spring	99	37021312	Washer
41	37090610	O ring	100	37024310	Washer
42	37090318	O ring	101	37001310	Screw
43	37620790	Ring nut	102	37006214	Screw
44	37621770	Safety latch	103	37621920	Magazine wear plate
45	37621801	Safety assembly, w/depth adjuster	104	37011212	Nut
46	37621700	Feeder Cover	105	37024208	Washer
47	37621542	Nose plate	106	37674900	Body wear plate
48	37090566	O ring	107	37621910	Spacer
49	37090614	O ring	109	37621821	Safety
50	37621451	Top balancer	110	37621870	Depth adjuster
51	37050620	Spring	111	37001310	Screw
52	37620380	Lock	112	37021312	Washer
53	37050630	Spring	113	37024310	Washer

RROLUP.XLS

**A**

New # uses U-cup seals for better wear. 37088020 replaces 37091010 ; 37088010 replaces 37090518. Seals can be used on the new style piston only. Older pistons must use orings.